



# HPL Exterior Cladding



## EXTERIOR CLADDING

BEAUTY OF WOOD AND STRENGTH OF STEEL

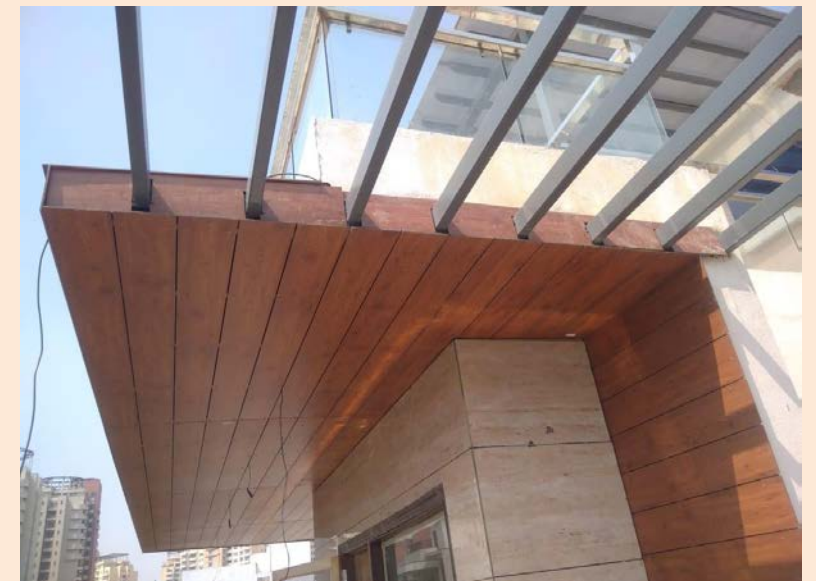


## WHO WE ARE ABOUT US



Flooring / Cladding is the silent spectator to all our activities. Thus, it plays a pivotal role around which everything else rotates. Keeping this inherent requirement in mind, KVC Floorings Pvt. Ltd.-a total Wooden flooring Solution Company, has brought the World's finest Products & Solutions for the Indian consumers. Company is run by hard-core professionals, who are committed to provide the best to the Indian consumers having its registered office at Delhi with a customized Head Office at Gurgaon. **01 [www.kvcflooring.com](http://www.kvcflooring.com)**

By launching KVC flooring in indian market, we have tried to give our indian consumer ,A one stop solution for their flooring needs. The product profile of KVC Flooring Pvt. Ltd. Includes wooden laminating flooring, solid wood flooring , Engineer wood ,carpets and vinyls. All these products are brought to india from the best companies in the word. Wooden laminating flooring meets all the criteria of modern living. Stronger and more durable than conventional floors, its surface with stand the rigors of day o day life efficiency. Its totally maintenance free (no waxing, sanding etc. ) & hygienic.The word over wooden flooring has replace traditional marble and stone. as the choice for interior in man's constant search for more functionally evolved and aesthetically superior floor surface materials.





# What is HPL ?

**Description of Material** – HPL according to EN 438 are materials with outstanding characteristics e.g. durability, clean ability, wear resistance, combined with a wide range of technical and design possibilities. HPL are easy to process and to maintain and therefore can be used in many applications.

**Manufacturing and Composition** – The excellent characteristics exhibited in use arises from the manufacturing process and the raw material used. Cellulosic fibrous based core material (normal paper) impregnated with thermosetting resin are pressed together under simultaneous application of heat (temperature  $> 120^{\circ}\text{C}$ ) and high specific pressure  $\geq 50\text{MPa}$  to obtain a homogenous non porous material with a density  $\geq 1,35\text{g/cm}^2$ . HPL have one or two decorative surfaces consisting of material resins which are one of the hardest surface materials available. The core layers consist of cured Phenolic resin.

HPL for exterior use can have an additional outer layer or coating to enhance weather and light protecting properties.

**Decorative Scope** – HPL are available in a wide range of colours, patterns and abstracts combined with different textures and gloss levels. Excellent reproduction of natural materials such as textiles, fabrics, exotic wood veneers, and stone can be achieved.

Different printing technologies e.g. digital, screen and offset printing can be used to produce customized designs. Alternative finishes such as metal, real wood veneer and pearlescent effects are available to widen the designer's pallet.





**15 Years**  
Warranty



**All Weather**  
**Resistant**



**No Fading**



**No De-lamination**



**Manufactured** With Only  
European Design Papers

## CLADAGE ADVANTAGE



Borer Free



Termite Free



Waterproof



Eco Friendly



Fire Proof



Resistance  
to Natural  
Elements



No Special  
Tools



Cost Effective



Satisfaction  
Guaranteed



“Beauty of **Wood**,  
Strength of **Steel**”





KP - 2204 Original Pine





KP-454





KP-453



KP-454



KP-484



KP-494



KP-497



KP-498

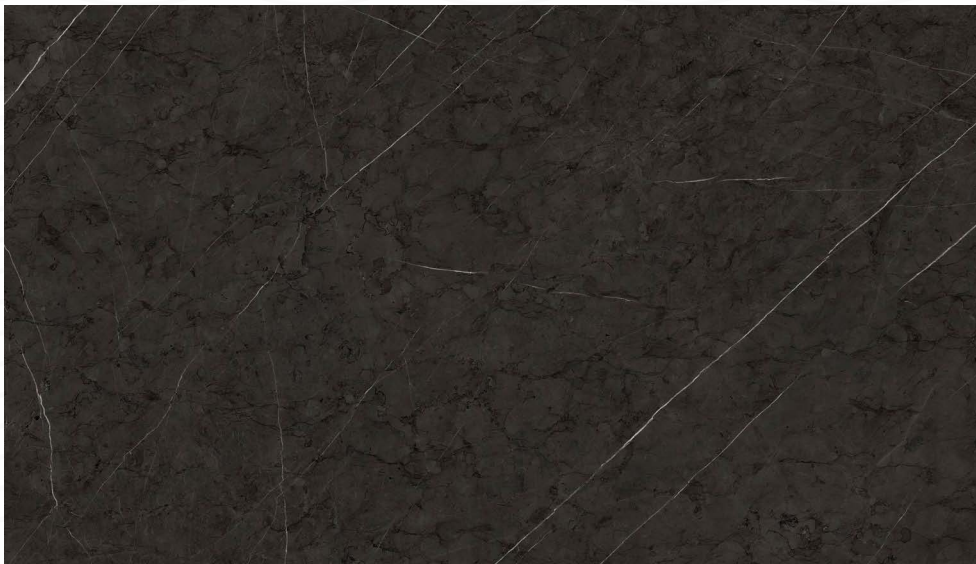




KP-583



KP-613



KP-662



KP-712



KP-713



KP-714

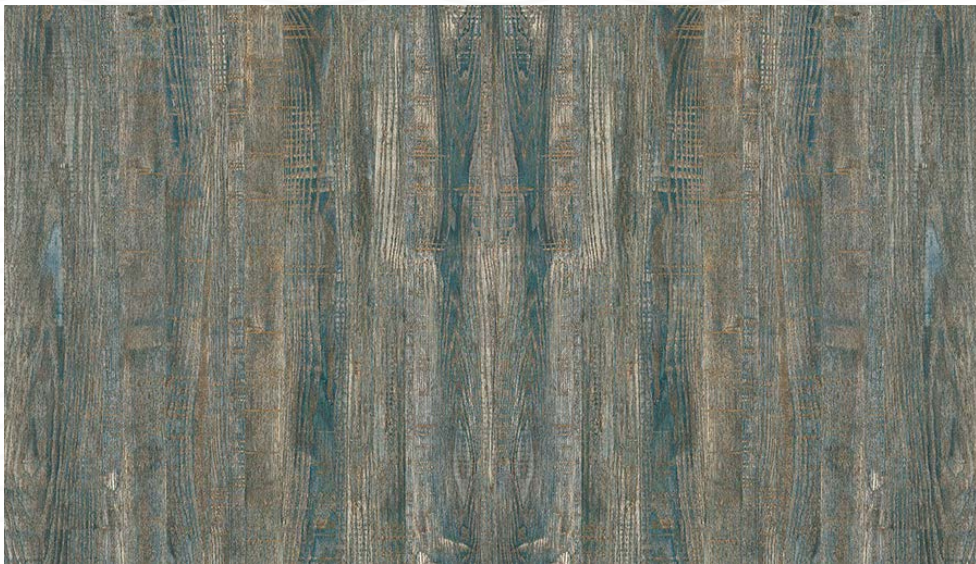




KP-763



KP-780



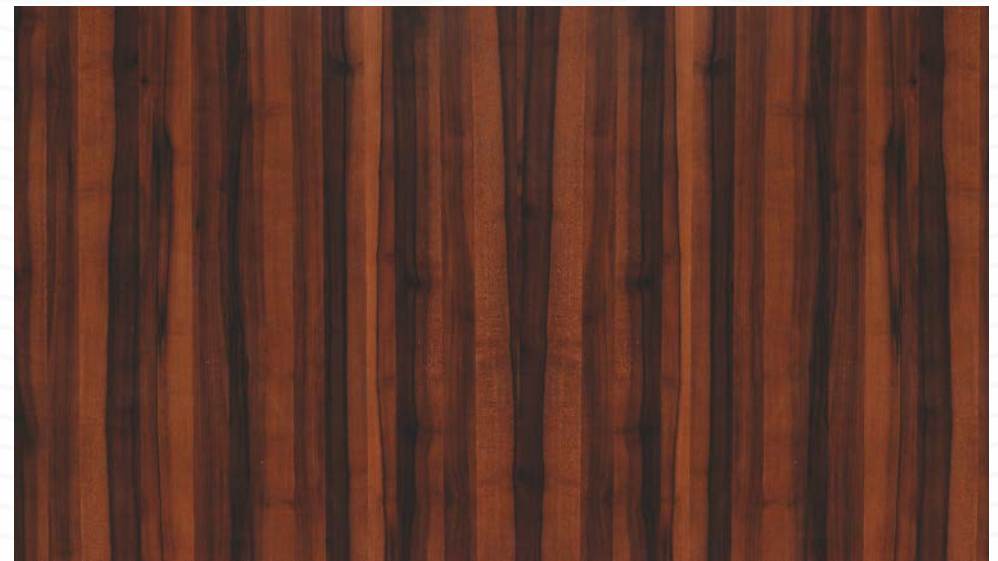
KP-783



KP-806



KP-807



KP-847





KP-861



KP-990



KP-991



KP-992



KP-993



KP-2204





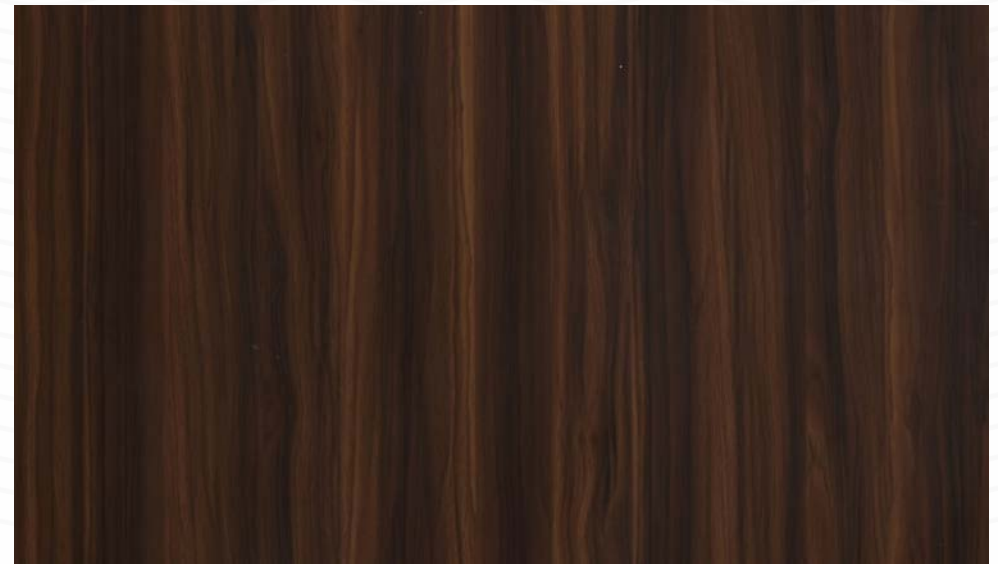
KP-2212



KP-2221



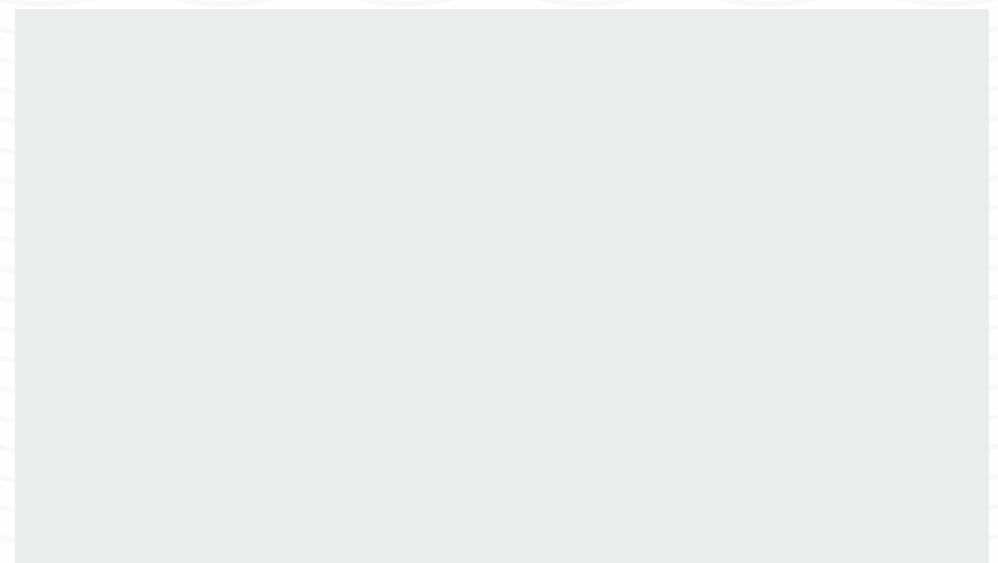
KP-2222



KP-5110



KP-7722



KP-

SL. No.	PROPERTIES	TEST METHOD	ATTRIBUTES OF PERFORMANCE	UNIT OF MEASUREMENT	RESULTS (AS PER EN 438-7)
1	DIMENSIONAL PROPERTIES				
1.1	Thickness	EN 438-2.5	Thickness tolerance	6 mm	$5 \leq T < 8 : \pm 0,4$
1.2	Size	EN 438-2.6	Length and width	8	$\pm 10 / - 0$
1.3	Straightness of edges	EN 438-2.7	Straightness of edges	mm/m	$\leq 1,5$
1.4	Squareness	EN 438-2.8	Squareness	mm/m	$\leq 1,5$
1.5	Flatness	EN 438-2.9	Flatness (measured on full size sheet).	mm/m	$2,0 \leq T < 6,0 : 8$
2	PHYSICAL PROPERTIES				
2.1	Flexural Modulus	EN ISO 1 78	Stress	Mpa	$\geq 9000$
2.2	Flexural Strength	EN ISO 1 78	Stress	Mpa	$\geq 80$
2.3	Tensile Strength	EN ISO 527-2	Stress	Mpa	$\geq 60$
2.4	Density	EN ISO 1183	Density	gm/cm <sup>3</sup>	$\geq 1,35$
2.5	Resistance to impact with large diameter ball	EN 438-2.21	Indent. dia 10mm $2 \leq T < 6$ mm Drop Height	min.	$\geq 1400$
			Indent. dia 10mm $T \geq 6$ mm - Drop Height	min.	$\geq 1800$
2.6	Resistance to Wet Conditions	EN 438-2.15	Mass increase - $2 \leq T < 5$ mm	max. %	EGS/EDS- $\leq 7$ , EGS/EDS- $\leq 10$
			Mass increase - $2 \geq T < 5$ mm	max. %	EGS/EDS- $\leq 5$ , EGS/EDS- $\leq 8$
			Appearance	Rating	$\geq 4$
2.7	Dimensional stability at elevated temperatures	EN 438-2.17	Cumulative dimensional change- $2 \leq T < 5$ mm	Longitudinal %	$\leq 0,40$
				Transversal %	$\leq 0,80$
			Cumulative dimensional change- $2 \geq T < 5$ mm	Longitudinal %	$\leq 0,30$
				Transversal %	$\leq 0,60$
3					
3.1	Resistance to Climatic Shock	EN 438-2.19	Thermal Shock Resistance - Appearance	Rating	$\geq 4$
3.2	Resistance to Artificial Weathering	EN 438-2.29	Contrast	Grey scale rating	$\geq 3$





## Get In Touch

### **KVC Floorings Pvt. Ltd.**

2602P, Near Shishu One School  
Sector 57, Gurgaon-122003

Regd. Office:  
654/1, Road No. 0, Ghitorni,  
New Delhi - 110030

Web : [www.kvcflooring.com](http://www.kvcflooring.com)

**+91-124-4210024, 9990000809, 9810235033**

[kvcfloorings@yahoo.com](mailto:kvcfloorings@yahoo.com)

[amitanshu\\_chaudhary@rediffmail.com](mailto:amitanshu_chaudhary@rediffmail.com)

